

STRUCTURES[®]

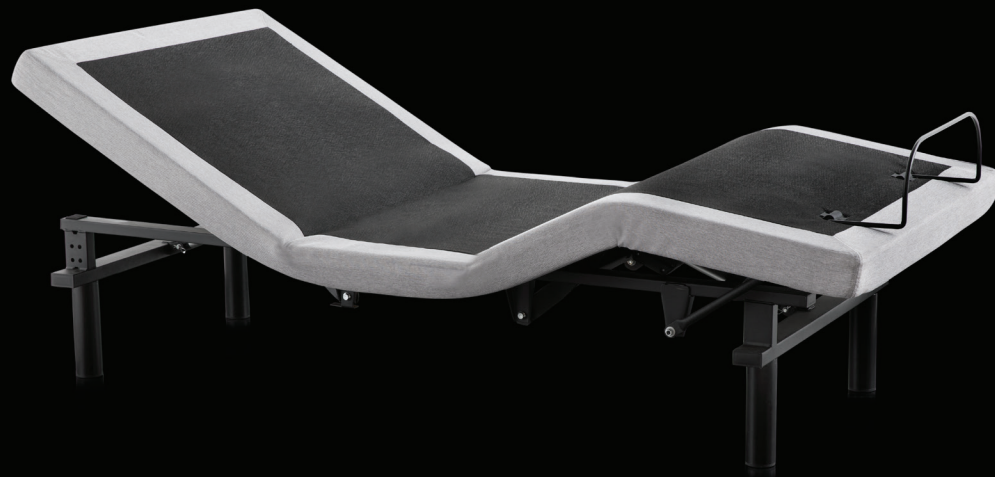


This STRUCTURES™ product is backed by a 20-year limited warranty.
For more information, visit:

www.maloufsleep.com

STRUCTURES[®]

M550 ADJUSTABLE BASE OWNER'S MANUAL



WARNINGS



IMPORTANT: PLEASE READ ALL SAFETY INSTRUCTIONS THOROUGHLY BEFORE USING THIS PRODUCT. SAVE THESE INSTRUCTIONS.

BEFORE USE

- Carefully remove packaging. Take care not to damage the bed frame or any included parts.
- Carefully read and follow the set up and installation instructions included with the product.

ELECTRICAL

- This product is for use on a standard 120-volt circuit.
- Always use a grounded, electrical surge protection device with this product. This product should be plugged directly into the surge protection device and the surge protection device should be plugged directly into a wall outlet.
- Only connect this product to a properly grounded outlet.
- Always unplug this bed from the electrical outlet before cleaning or servicing.
- Never operate with a damaged cord or plug. Keep the cord away from this product's moving parts.
- Keep the cord away from heated surfaces.
- Do not use this product outdoors.

SMALL CHILDREN / PETS

- Immediately dispose of all packing materials that may pose a suffocation risk.
- Do not allow children or pets to play on or under the bed. Children should not operate this product without adult supervision.

PACEMAKERS

- Some pacemakers may detect motion by this product as a false sense of movement and/or exercise. This may or may not affect your pacemaker. Talk to a physician to address any concerns.

HOME USE / HOSPITAL DISCLAIMER

- This product is designed solely for in-home use and not as a hospital bed. The product does not meet hospital standards. Do not use with oxygen or other flammable gasses.

WEIGHT RESTRICTIONS

- The recommended weight restrictions for the STRUCTURES™ M550 Adjustable Base are as follows: (all weights include the weight of the mattress and bedding)

Twin: 850 lbs. | Full: 850 lbs. | Twin XL: 850 lbs. | Queen: 850 lbs. | Split Beds: 850 lbs. per side

- This product will support the recommended weight limits when weight is distributed evenly across the base. This product is not designed to support or lift this amount in the head or foot sections alone. Consumers should not enter or exit the bed when any portion of it is in the raised position. Do not sit on the head or foot sections while in the raised position. Exceeding the recommended weight restrictions or other misuse of this product could damage the bed and void the warranty.

SOUND

- The massage function will emit an audible tone during operation. The volume of this tone is directly related to the location and environment. For example, a bed placed on wooden flooring may increase the audible tone of the massage function, where a bed placed on carpet may emit a softer tone.

PRODUCT RATINGS

IMPORTANT: USE THIS PRODUCT ONLY AS DESCRIBED IN THESE INSTRUCTIONS. DO NOT MODIFY ANY PARTS OR COMPONENTS.

MOTOR RATINGS

- The STRUCTURES™ M550 Adjustable Base motors are not designed to operate for more than two [2] continuous minutes within an eighteen [18] minute time period. Exceeding this rating will shorten the life of the motors, and will void the warranty.

POWER RATINGS

- **INPUT:** AC 100-240V - 50/60Hz, 1.5 Amp
- **OUTPUT:** DC 29V-2A
- This product is designed to have no maintenance requirements by the user. Please do not open any motor compartments, alter the wiring, modify the base, or change the product in any way as it will void the warranty.

FCC COMPLIANCE

- Operates on 2.4 GHz frequency transmitter.
- This device complies with part 15 of the FCC Rules. Operation is subject to the following two conditions: (1) This device may not cause harmful interference, and (2) this device must accept any interference received, including interference that may cause undesired operation.
- To comply with the FCC RF exposure requirements, no change to the antenna or the device is permitted. Any change to the antenna or the device could result in the device exceeding the RF exposure requirement and void user's right to operate the device.

For any questions or concerns regarding this product please contact MALOUF[®] directly:

WWW.MALOUFSLEEP.COM • CUSTOMERSERVICE@MALOUFSLEEP.COM • 800.517.7179

CONTENTS

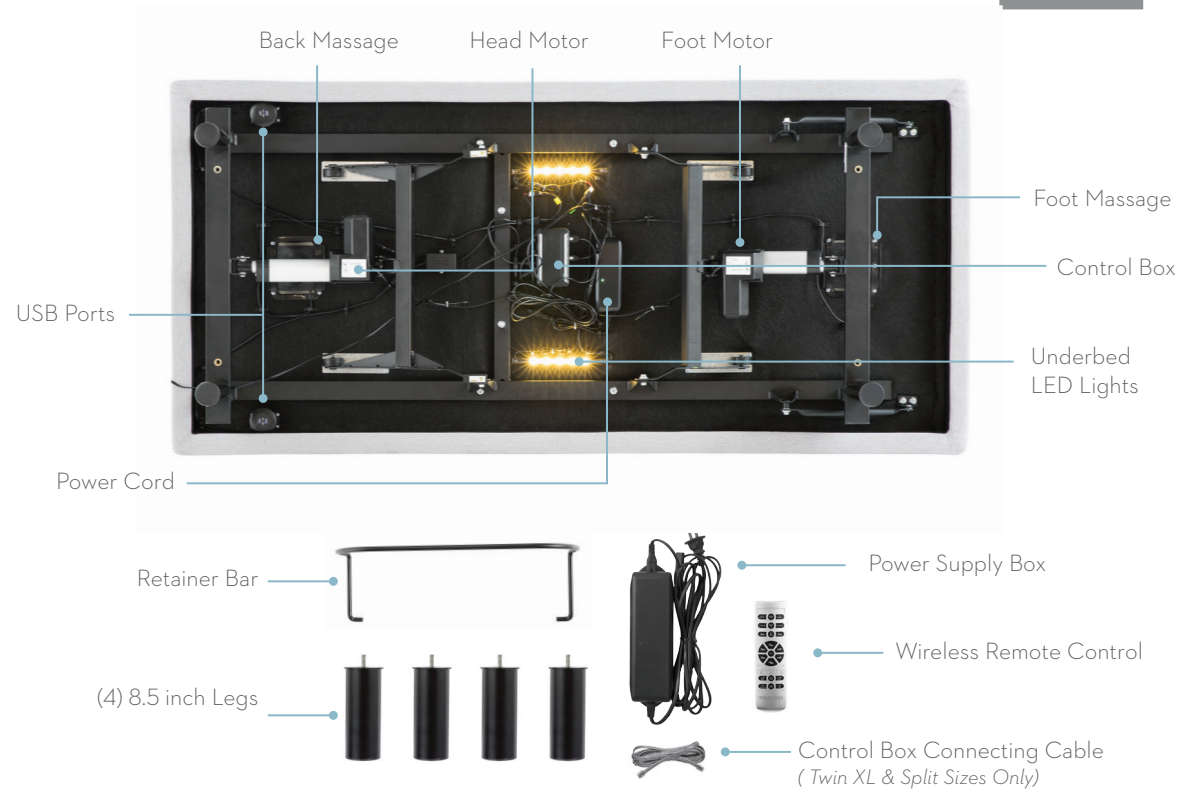
| | |
|--|---------|
| ■ Overview | 1 - 2 |
| ■ Assembly | 3 - 8 |
| ■ Remote Control | 9 - 16 |
| ■ Massage | 17 - 18 |
| ■ Electrical Components and Backup Battery | 19 - 24 |
| ■ Synchronizing Two Bases | 25 - 26 |
| ■ Test All Functions / Additional Help | 27 - 30 |
| ■ Warranty Information | 31 - 32 |

OVERVIEW

Get to know your product

Before beginning assembly of the STRUCTURES™ M550 Adjustable Base, please take a moment to familiarize yourself with the parts and location of components. See the adjacent image for a detailed overview.

If any parts or components are missing, or are different than shown in the adjacent image, do not attempt to complete the assembly process and contact customer support: 800.517.7179 / customerservice@maloufsleep.com



STRUCTURES[®]

M550 ADJUSTABLE BASE OWNER'S MANUAL

ASSEMBLY

Before you begin...



A minimum of two people are required to assemble this adjustable base.



Open box on the floor in the flat position, bottom facing up, to avoid damage.

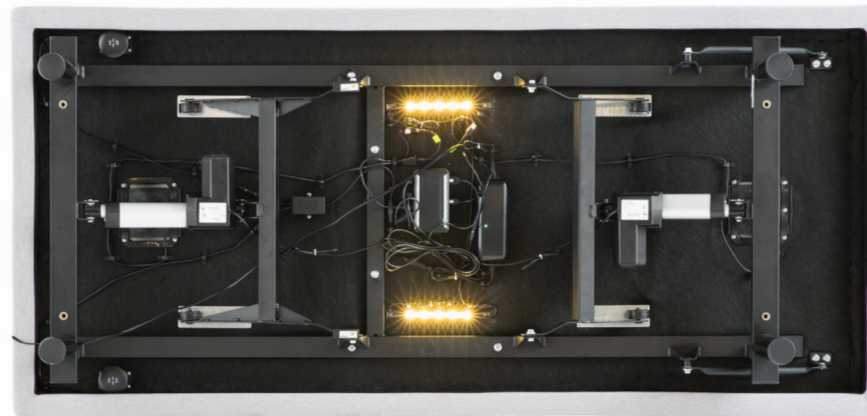
Step 1:

Place the box in the room the bed will be used with the bottom of the box facing up. Carefully remove the binding straps and packaging material, taking care not to puncture the box with any sharp objects.

Step 2:

Remove the bed base from the box and set mattress (top) side down on the floor (see image A). Remove all plastic and zip ties. All components and parts are located in the underside of the base. Remove attached parts and set aside in preparation for assembly (see image B). Check to make sure all parts have been included and are not damaged (see page 2 for a list of all parts and components).

A



B



ASSEMBLY

Step 3:

Hand tighten all four legs into the bed frame until secure. Note that there are two location options for each leg, an outside placement or an inside placement. Tighten the legs in the location of your choosing, maintaining a consistent inside or outside location throughout. Take care not to over tighten (see *image A*).

Step 4:

With two to four people, lift the bed by the metal frame and turn it over so the mattress (top) side is facing up (see *image B*). Take caution not to lift the bed with the fabric, or to use the legs as pivot points causing angled pressure as this may cause damage. Move the bed to the desired location.

A



B



ASSEMBLY

Step 5:

To install the mattress retainer bar, insert one end of the retainer bar in its respective slot until it slides fully into place (see *image A*). Flex retainer bar to insert the other end on the other side. The retainer bar is now installed.

Step 6:

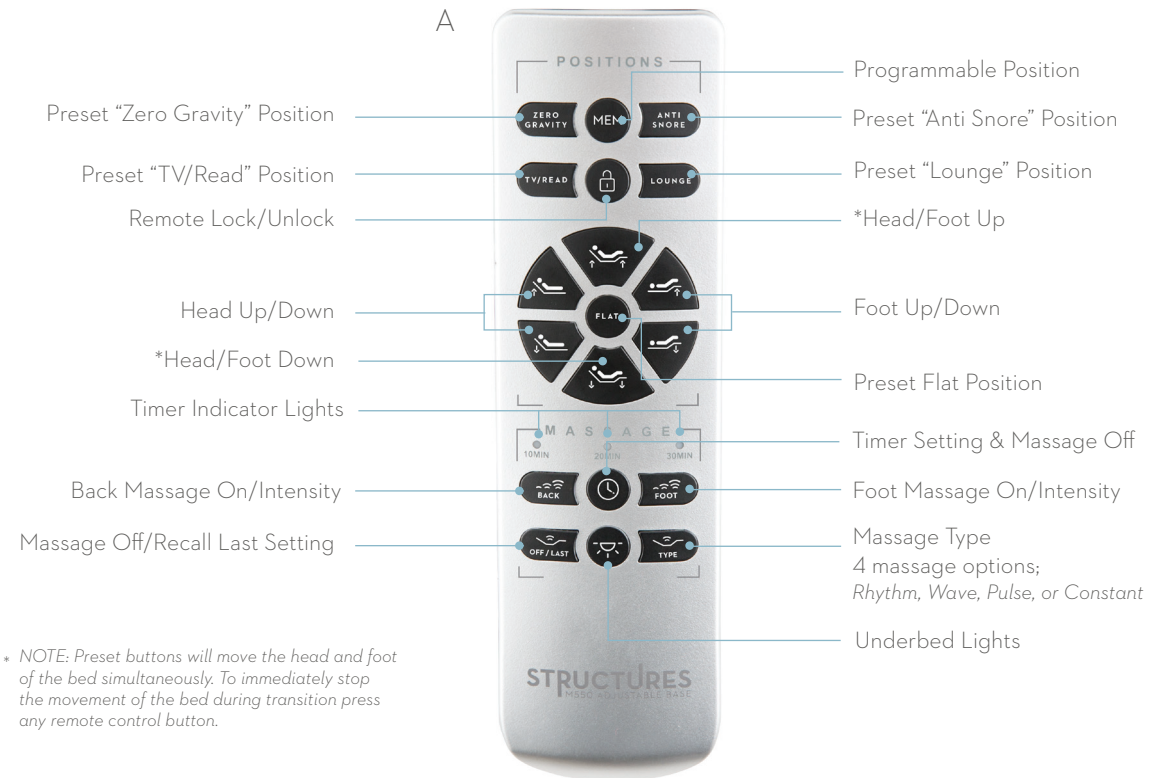
Plug the power cord into the wall outlet and run the test on pages 27 – 28 of this manual. You may want to familiarize yourself with the remote control functions (pages 9 – 16) prior to running the test.



REMOTE CONTROL

Overview

All of the functions of the bed can be operated with the remote control. The remote control comes with pre-programmed buttons that will automatically adjust when pressed, or you can manually control adjustments using the arrow buttons on the remote control. See the diagram to the right (image A) for a complete list of remote control functions.



REMOTE CONTROL

Remote Control Battery Installation:

Remove the battery cover on the back side of the remote control. Insert three AAA batteries (included) as shown (see image B).

Custom Programming Buttons

The "ZERO GRAVITY", "ANTI SNORE", "TV/READ", "LOUNGE" and "MEM" buttons can be custom programmed to positions of your choosing. To program the remote preset buttons:

1. Adjust the bed to the desired position.
2. Press and hold the desired button for programming.
3. The "Massage Timer" lights will illuminate. The button is now programmed.

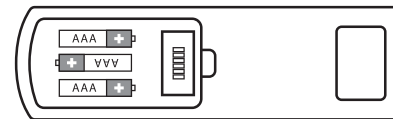
A



NOTE:
The four buttons shown here are pre-programmed with the manufacturers suggested bed positions. No programming is necessary by the user unless modified bed positions are desired.

The "MEM" (or memory) button is programmable for personalized, custom positions.

B



REMOTE CONTROL PAIRING

Step 1:

Ensure the remote batteries are installed and are functioning (see pages 11 - 12). Ensure the power cord is plugged into a powered source.

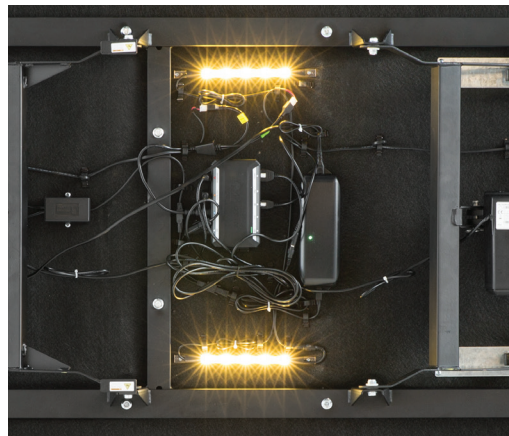
Step 2:

Once the base is plugged in, the underbed LED lights will begin to flash (see image A). Press any button on the remote, and the LED lights should turn off (see image B). The remote is now paired.

Backup Pairing

If remote loses pairing with the base, or if the remote is lost/misplaced and a new remote needs to be paired, disconnect and reconnect the power cord from the wall. Then follow steps 1 - 2 above to finish pairing the remote.

A



B



Press ANY button to pair remote to base.

REMOTE CONTROL

Lock Safety Feature

The remote control can be locked to prevent movement of the bed. When the remote control is locked, no buttons will function and the LOCK button will illuminate red when a button is pressed.

To lock the remote control:

Press and hold the lock button for 5-7 seconds, or until the button stops flashing red. The remote is now locked.

To unlock the remote control:

Press and hold the lock button for 5-7 seconds, or until the button stops flashing. The remote is now unlocked and ready to use.



Press and hold to lock/unlock

MESSAGE

Message Function:

To activate the massage function, press the desired "BACK" and/or "FOOT" button once. To adjust the intensity of the massage function, press the "BACK" and/or "FOOT" button again. There are three levels of intensity.

Message Timer:

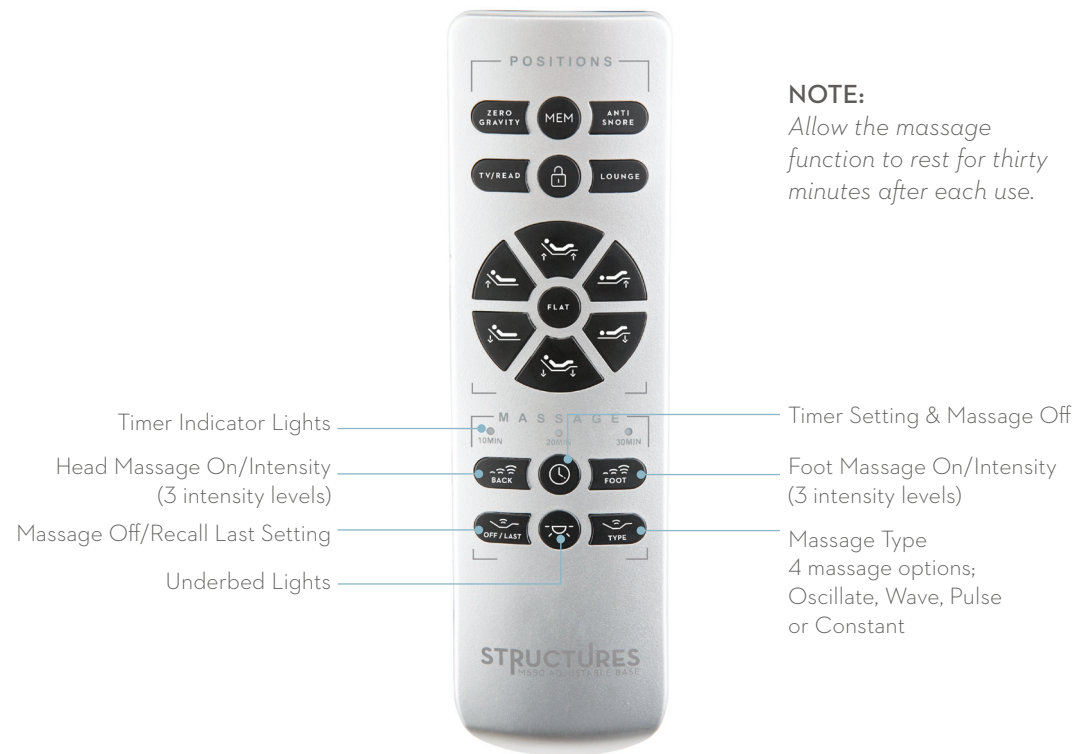
With the massage function in use, press the "TIMER" button to select a 10, 20, or 30 minute massage. The light above will illuminate indicating which timer setting is activated.

Message Type:

There are four massage type options; oscillate, wave, pulse or constant. Press the "TYPE" button to activate an alternate massage option.

Message Off/Recall Last Setting:

With the massage function on, press the "OFF/LAST" button to turn off all massage functions. Press the button again to return to previous massage type and timer settings.



NOTE:

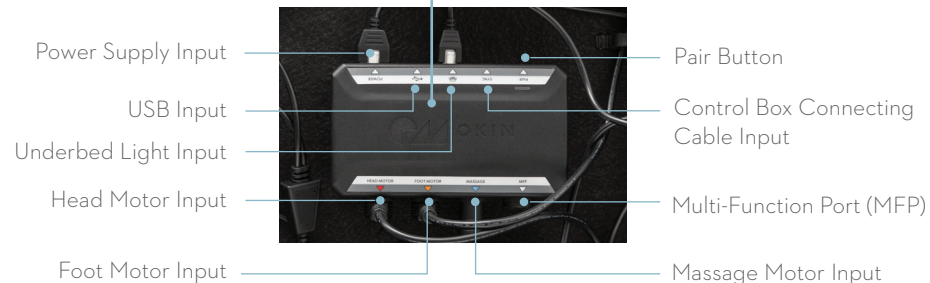
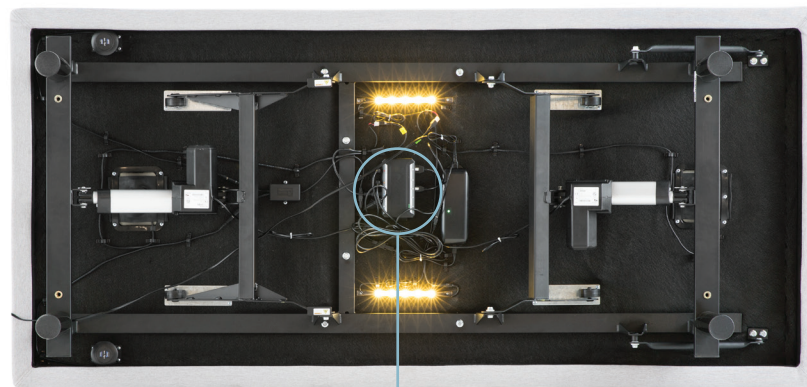
Allow the massage function to rest for thirty minutes after each use.

ELECTRICAL COMPONENT SETUP

Overview

The electronic components are pre-installed and no assembly is necessary, however, some setting and input locations are important for proper set up and functionality (see *images A & B* to become familiar with input, setting and part locations).

A



STRUCTURES[®]

M550 ADJUSTABLE BASE OWNER'S MANUAL

ELECTRICAL COMPONENT SETUP

USB Ports

USB ports are located under the head portion of the bed base at two locations (see *image A*). To access the USB ports, press the "HEAD UP" button to raise the bed and reveal the USB ports. Once your device is plugged into the USB port, you may lower or adjust the bed to your preference.

A



STRUCTURES[®]

OWNER'S MANUAL
M550 ADJUSTABLE BASE

BACKUP BATTERY

Overview

Important: The backup battery is only to be used in case of a power outage. Batteries are not to be used for normal operation of the bed. The backup battery will not support repeated movement for an extended period of time.

Backup Battery Use:

Use two 9V batteries only (not included). If a power outage occurs, install the 9V batteries into the power supply to allow temporary power to the base (see image A).

Installing Batteries:

Unplug the power cord from the outlet and remove the cover from the compartment on the underside of the power supply (see image B). Place two 9V batteries inside, close the cover and plug the power cord back into the wall outlet. The backup battery will not support repeated movement for extended periods of time. **After power is restored, unplug power cord, remove the batteries, then plug the power cord back into the wall for normal use.**

A



B



SYNCHRONIZING TWO BASES

*(for Twin XL and
split sizes only)*

HOW TO CONNECT

Step 1:

Place two Twin XL or split size adjustable bases next to each other in desired location. Plug in "Control Box Connecting Cable" (see *image A*) to the control box of each base into the "Sync" input (see *image B*) on the control box.

Step 2:

With the connecting cable installed, use remote and test all functions of the bed base. (see *pages 27-28*). If remotes are not working, troubleshoot the problem by following the instructions on (*pages 13-14*).

The two bases are now connected and ready for normal use.



TEST ALL FUNCTIONS

Overview

To ensure proper setup, use remote and test all functions for 3 seconds.

Important: Always return the base to the flat position when switching between preset options.

- Zero Gravity Preset
- Anti-Snore Preset
- TV/Read Preset
- Lounge Preset
- Memory
- Remote Lock
- Head Up
- Head Down
- Flat
- Head/Foot Up
- Head/Foot Down
- Foot Up
- Foot Down
- Back Massage/Intensity
- Foot Massage/Intensity
- Timer
- Massage Off/Last
- Massage Type
- Underbed LED Lights



**ADDITIONAL
HELP**

If one or more functions of the bed have stopped working or one or more of the remote control buttons activate the wrong function:

Check under the bed base to verify the wired connections are secure and there are no cords or bedding obstructing the movement of the base. If the remote control activates the wrong function, the motors are plugged into the wrong input on the control box. Switch the input location of the cords on the control box.

The remote control lights no longer illuminate / the remote won't operate the bed functions:

Ensure remote lock has been deactivated (see pages 15 - 16). Make sure the batteries are installed correctly or install three new AAA batteries into the remote control.

The remote control lights illuminate, however no functions of the bed will operate:

Check to ensure the power cords are properly connected.

Unplug the base for 1 hour to reset the electronic components.

Plug base into a different electrical outlet, or test current outlet with another working appliance. A grounded electrical surge protector is recommended with use of this product.

For further assistance contact us at: 800.517.7179 / customerservice@maloufsleep.com

NOTES:

Serial Number:

20 YEAR LIMITED WARRANTY

WHAT IS COVERED

This warranty covers any defects in materials or workmanship under the conditions and exceptions stated below.

HOW LONG COVERAGE LASTS

This warranty runs for up to 20 years from the date of purchase, according to the tiers set forth below.

WHAT MALOUF[®] WILL DO

YEAR 1:

Warranty covers defects in the workmanship or materials for a period of 1 year from the date of purchase. Malouf[®] will send replacement parts for any defective part to the purchaser, and Malouf[®] will pay all authorized labor and transportation costs associated with the repair or replacement of any parts.

YEARS 2-5:

During the years 2 - 5 from the date of purchase, Malouf[®] will offer replacement parts for any defective part to the purchaser. The purchaser shall bear all service, transportation, labor, and shipping costs associated with the repair or replacement of the defective part(s).

YEARS 6-20:

During the years 6 - 20, Malouf[®] will offer replacement parts for any mechanical bed part (excluding electronics, electrical components, drive motors, and massage motors). Purchaser shall pay 1/15th of the replacement cost of the defective part multiplied by the number of years since 5 years after the warranty commencement date, and Malouf[®] shall bear the remainder of the cost of the replacement part. The purchaser shall bear all service, transportation, labor, and shipping costs associated with the repair or replacement of the defective part(s).

HOW TO GET SERVICE

E-mail "warranty@maloufsleep.com" to submit your warranty claim. Please keep your receipt so that we may process your warranty request.

HOW STATE LAW APPLIES

This warranty gives you specific legal rights, and you may also have other rights which vary from state to state.

The foregoing warranty shall be exclusive and in lieu of any other warranty, express or implied, including warranties of merchantability and fitness for a particular purpose and all other warranties otherwise arising by operation of law, course of dealing, custom, trade, or otherwise. malouf[®] shall not be liable for any consequential damages or losses arising from the purchase, installation and/or use of this product.

For any questions or concerns regarding this product please contact MALOUF[®] directly:

WWW.MALOUFFSLEEP.COM • CUSTOMERSERVICE@MALOUFFSLEEP.COM • 800.517.7179