

STRUCTURES[®]



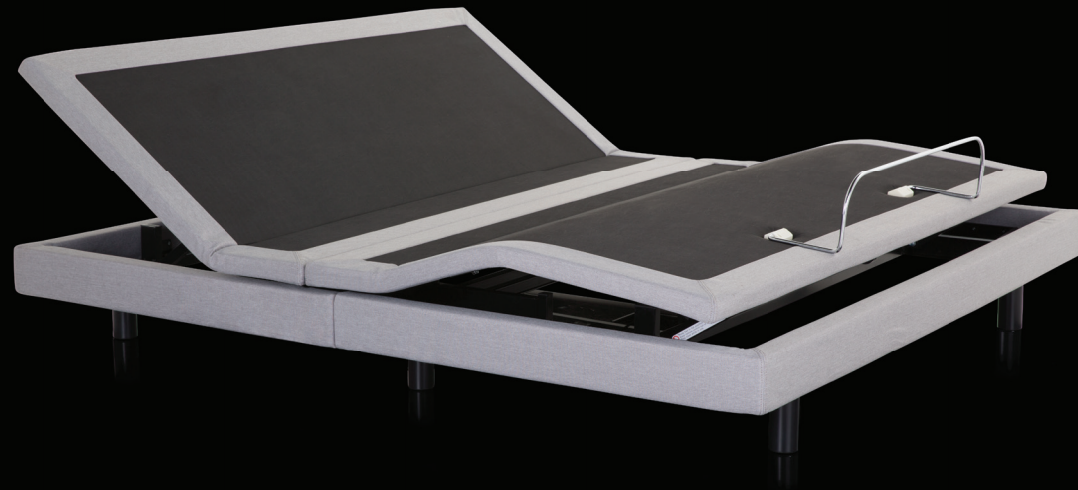
This STRUCTURES[™] product is backed by a 20-year limited warranty.
For more information, visit:

www.maloufsleep.com

WWW.MALOFSLEEP.COM • CUSTOMERSERVICE@MALOFSLEEP.COM • 800.517.7179

MALOUF[®]

STRUCTURES[®] OWNER'S MANUAL M510 KD ADJUSTABLE BASE



WARNINGS

IMPORTANT: PLEASE READ ALL SAFETY INSTRUCTIONS THOROUGHLY BEFORE USING THIS PRODUCT. SAVE THESE INSTRUCTIONS.

ELECTRICAL

- This product is for use on a standard 120-volt circuit.
- Always use a grounded, electrical surge protection device with this product. This product should be plugged directly into the surge protection device and the surge protection device should be plugged directly into a wall outlet.
- Only connect this product to a properly grounded outlet.
- Always unplug this bed from the electrical outlet before cleaning or servicing.
- Never operate with a damaged cord or plug. Keep the cord away from this product's moving parts.
- Keep the cord away from heated surfaces.
- Do not use this product outdoors.
- To disconnect, turn all controls to the off position, then remove plug from outlet.

SMALL CHILDREN / PETS

- Immediately dispose of all packing materials that may pose a suffocation risk.
- Do not allow children or pets to play on or under the bed. Children should not operate this product without adult supervision.

PACEMAKERS

- Some pacemakers may detect motion by this product as a false sense of movement and/or exercise. This may or may not affect your pacemaker. Talk to a physician to address any concerns.

HOME USE / HOSPITAL DISCLAIMER

- This product is designed solely for in-home use and not as a hospital bed. The product does not meet hospital standards. Do not use with oxygen or other flammable gasses.

WEIGHT RESTRICTIONS

- The recommended weight restrictions for the STRUCTURES[™] M510 KD Adjustable Base are as follows: (all weights include the weight of the mattress and bedding)

Queen: 750 lbs. | King: 750 lbs.

- This product will support the recommended weight limits when weight is distributed evenly across the base. This product is not designed to support or lift this amount in the head or foot sections alone. Consumers should not enter or exit the bed when any portion of it is in the raised position. Do not sit on the head or foot sections while in the raised position. Exceeding the recommended weight restrictions or other misuse of this product could damage the bed and void the warranty.

SOUND

- The massage function will emit an audible tone during operation. The volume of this tone is directly related to the location and environment. For example, a bed placed on wooden flooring may increase the audible tone of the massage function, where a bed placed on carpet may emit a softer tone.

PRODUCT RATINGS

IMPORTANT: USE THIS PRODUCT ONLY AS DESCRIBED IN THESE INSTRUCTIONS. DO NOT MODIFY ANY PARTS OR COMPONENTS.

MOTOR RATINGS

- The STRUCTURES™ M510 KD Adjustable Base motors are not designed to operate for more than two [2] continuous minutes within an eighteen [18] minute time period. Exceeding this rating will shorten the life of the motors, and will void the warranty.

POWER RATINGS

- **INPUT:** AC 100-240V - 50/60Hz, 1.5 Amp
- **OUTPUT:** DC 29V-2A
- **FUSE:** 1.5A 250V
- If a short-circuit occurs, a fuse in the electrical motor compartment will be blown in order to protect the electrical components. Should this occur, the customer should seek professional assistance by calling a licensed electrician or by contacting customer service at: 800.517.7179
- This product is designed to have no maintenance requirements by the user. Please do not open any motor compartments, alter the wiring, modify the base, or change the product in any way as it will void the warranty.

FCC COMPLIANCE

- Operates on 2.4 GHz frequency transmitter.
- This device complies with part 15 of the FCC Rules. Operation is subject to the following two conditions: (1) This device may not cause harmful interference, and (2) this device must accept any interference received, including interference that may cause undesired operation.
- To comply with the FCC RF exposure requirements, no change to the antenna or the device is permitted. Any change to the antenna or the device could result in the device exceeding the RF exposure requirement and void user's right to operate the device.

For any questions or concerns regarding this product please contact MALOUF® directly:

WWW.MALOUFSLEEP.COM • CUSTOMERSERVICE@MALOUFSLEEP.COM • 800.517.7179

CONTENTS

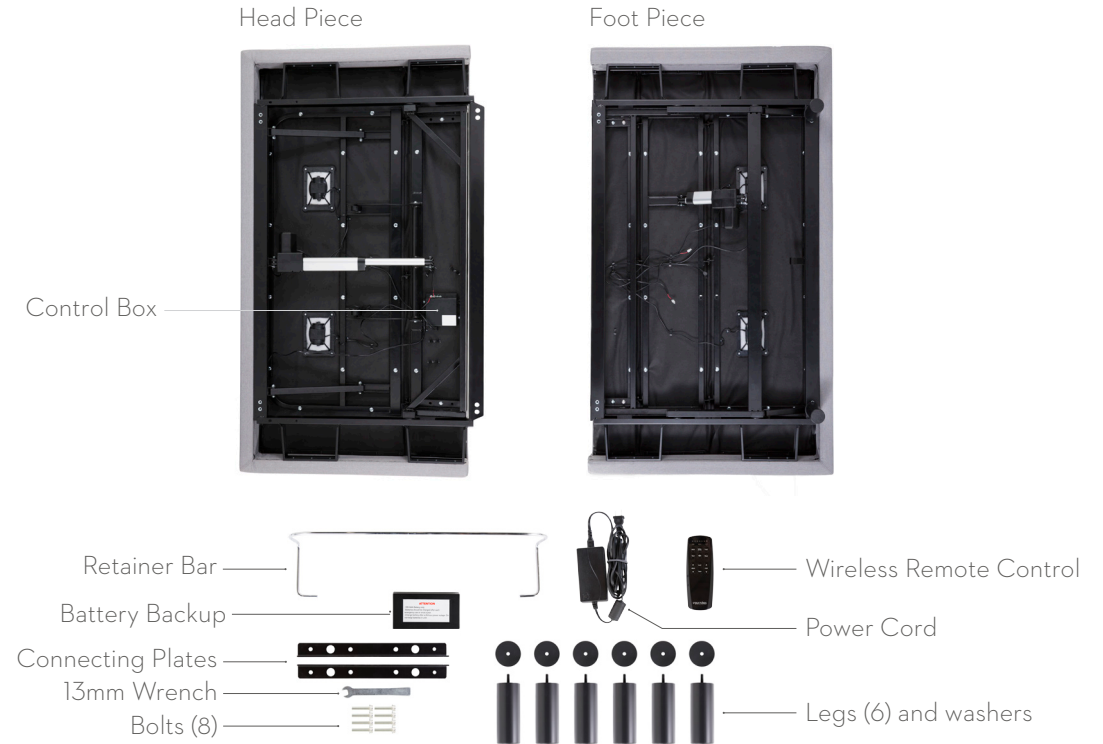
■ Overview	1 - 2
■ Assembly	3 - 12
■ Remote Control	13 - 18
■ Electric Components and Backup Battery	19 - 22
■ Massage	23 - 24
■ Test All Functions / Additional Help	25 - 28

OVERVIEW

Get to know your product

Before beginning assembly of the STRUCTURES™ M510 KD Adjustable Base, please take a moment to familiarize yourself with the parts and location of components. See the adjacent image for a detailed overview.

If any parts or components are missing, or are different than shown in the adjacent image, do not attempt to complete the assembly process and contact customer support: 800.517.7179 / customerservice@maloufsleep.com



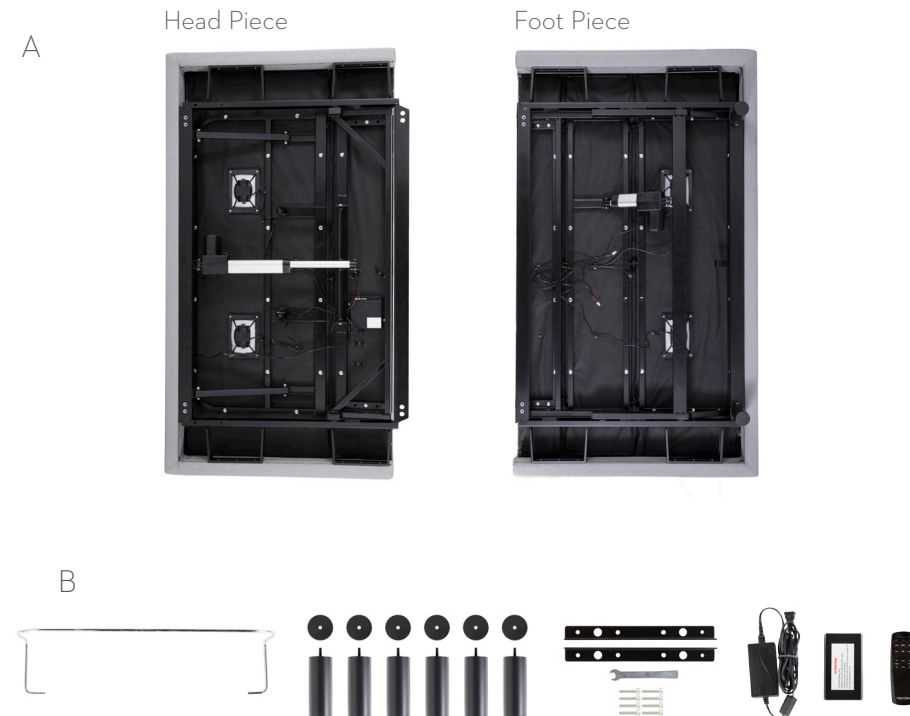
ASSEMBLY

Step 1:

Place the boxes in the room the bed will be used with the bottom of the boxes facing up. Carefully remove the binding straps and packaging material, taking care not to puncture the boxes with any sharp objects.

Step 2:

Remove the bed bases from the boxes and set mattress side down on the floor (see *image A*). Remove all plastic and zip ties. All components and parts are located in the underside of the base. Remove attached parts and set aside in preparation for assembly (see *image B*). Check to make sure all parts have been included and are not damaged (see page 2 for a list of all parts and components).



ASSEMBLY

Step 3:

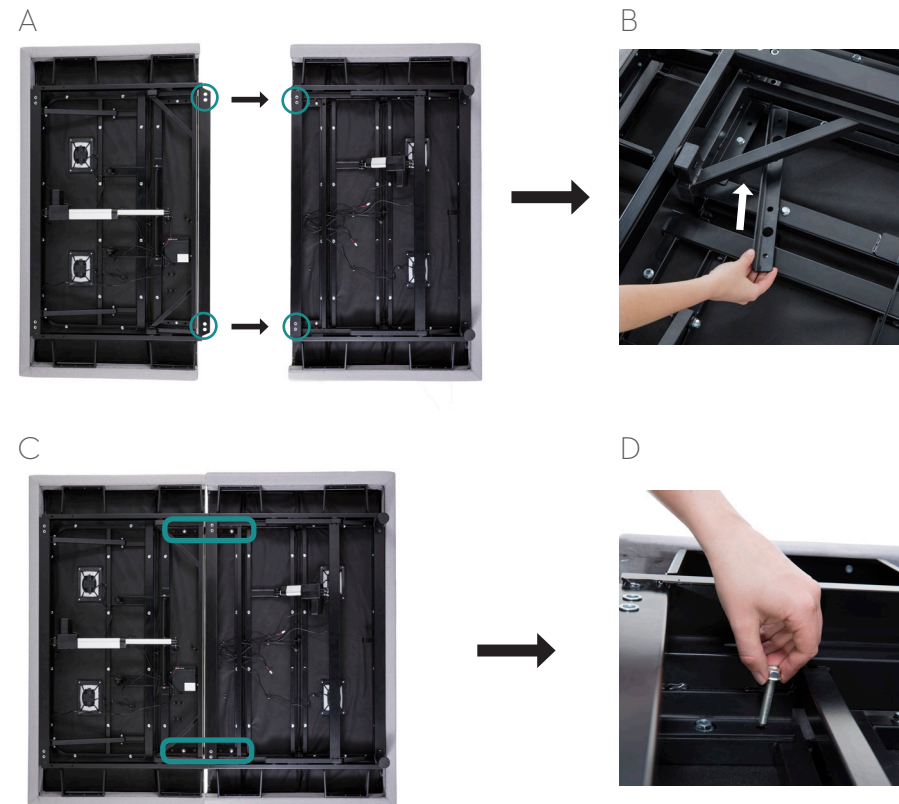
The connecting plates connect the two halves of the M510 KD Adjustable Base together. To attach the plates, slide the head piece and the foot piece of the bed together so that the holes on the head piece line up with the leg receiving holes on the foot piece (see *image A*).

Step 4:

Place the connecting plates to align with the bolt holes on each half of the bed. You will need to slide the connecting plates between some of the bars on the bed frames (see *image B*). The final location of the connecting plates are circled in *image C*.

Step 5:

Loosely hand tighten each bolt into the connecting plates to attach them to the bed frame (see *image D*). Once all the bolts are hand tightened and the plates are aligned properly, use the included wrench to tighten the bolts until secure.



ASSEMBLY

Step 6:

Place the washers on the legs and hand tighten all six (6) legs into the bed frame until secure. Note that there are two location options for each leg, an outside placement or an inside placement. Tighten the legs in the location of your choosing, maintaining a consistent inside or outside location throughout. Take care not to over tighten (see *image A*).

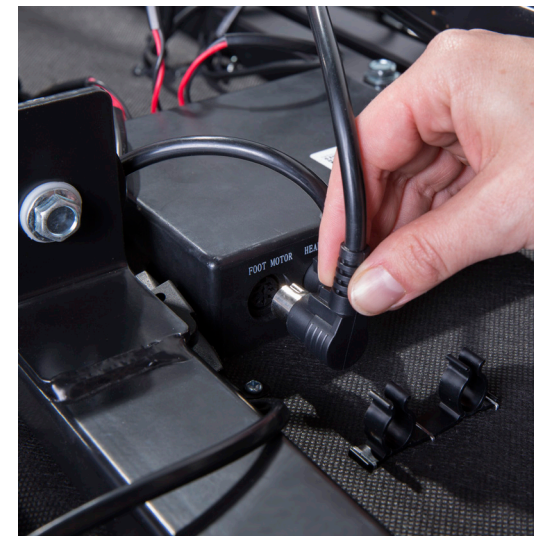
Step 7:

You will need to insert the wiring of the foot piece into the control box located on the head piece (see *the diagram on page 2 for the location of the control box*). Insert the wire for the foot motor in the location indicated on the control box (see *image B*).

A



B



ASSEMBLY

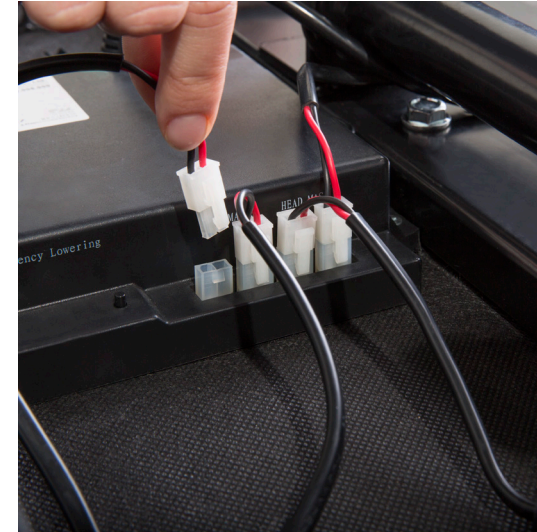
Step 8:

Now insert the two massage motor wires from the foot piece into the control box on the head piece (see *image A*). Ensure that the wires are not wrapped around any moving parts or bars of the bed frame.

Step 9:

Install the power cord by connecting the cord jack to the receptacle on the control box (see *image B*). Be sure the cord is connected completely and securely.

A



B



ASSEMBLY

Step 10:

With two (2) to four (4) people, lift the bed by the metal frame and turn it over so the mattress side is facing up. Take caution not to lift the bed with the fabric, or to use the legs as pivot points causing angled pressure as this may cause damage. Move the bed to the desired location.

Step 11:

To install the mattress retainer bar, place the bar over the receiving area on the foot end of the bed. Press firmly until the bar snaps into the slot. Repeat for the other side. The assembly is now complete.

Plug the power cord into the wall outlet and run the test on pages 25 – 26 of this manual. You may want to familiarize yourself with the remote control functions (pages 13 – 18) prior to running the test.

A



REMOTE CONTROL

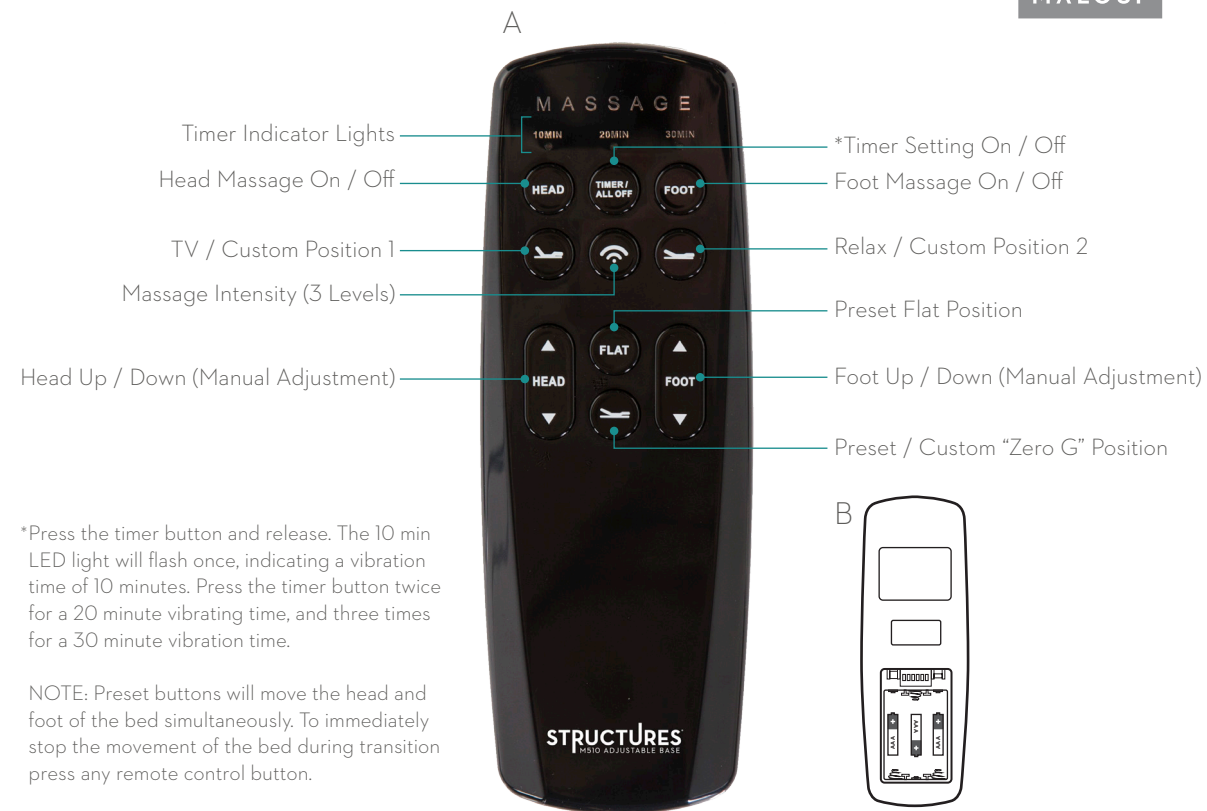
Overview

All of the functions of the bed can be operated with the remote control. The remote control comes with pre-programmed buttons that will automatically adjust when pressed, or you can manually control adjustments using the arrow buttons on the remote control. See the diagram to the right (*image A*) for a complete list of remote control functions.

Remote Control Battery Installation:

Remove the battery cover on the back side of the remote control. Insert the AAA batteries (included) as shown (see *image B*).






MALOUF[®]



REMOTE CONTROL

Custom Programming Preset Buttons:

The three (3) buttons shown in the adjacent diagram can be custom programmed to positions of your choosing. To program the remote preset buttons:

1. Adjust the bed to the desired position.
2. Press and hold the  for approximately three (3) seconds until the LED lights start flashing.
3. Release the  button and within one (1) second press  or  or . The LED lights will stop flashing and the selected button is updated to the new position.



NOTE:
The three buttons shown above are pre-programmed with the manufacturers suggested bed positions. No programming is necessary by the user unless modified bed positions are desired.

REMOTE CONTROL

Remote Control Frequency Settings

There are several different frequency settings for independent control of multiple adjustable beds in the same area.

To Set a Frequency:

1. Remove the power cord from the wall outlet before adjusting frequency settings.
2. Remove the battery cover from the remote control and adjust the switch to the desired channel (see *image A*). Wait until the LED lights on the remote turn off (*if LED lights are on*).
3. Wait for a few seconds and insert the power cord into the wall outlet.
4. Within fifteen (15) seconds of inserting the power cord, press and hold the “HEAD UP” button and the “FOOT UP” button simultaneously until the LED lights on the remote control start flashing (see *image B*). When flashing release the two buttons.
5. The LED lights will continue to flash until a successful sync with the control box is achieved. The frequency setting is now updated.
6. If the remote does not sync, repeat the process and check the remote control batteries.

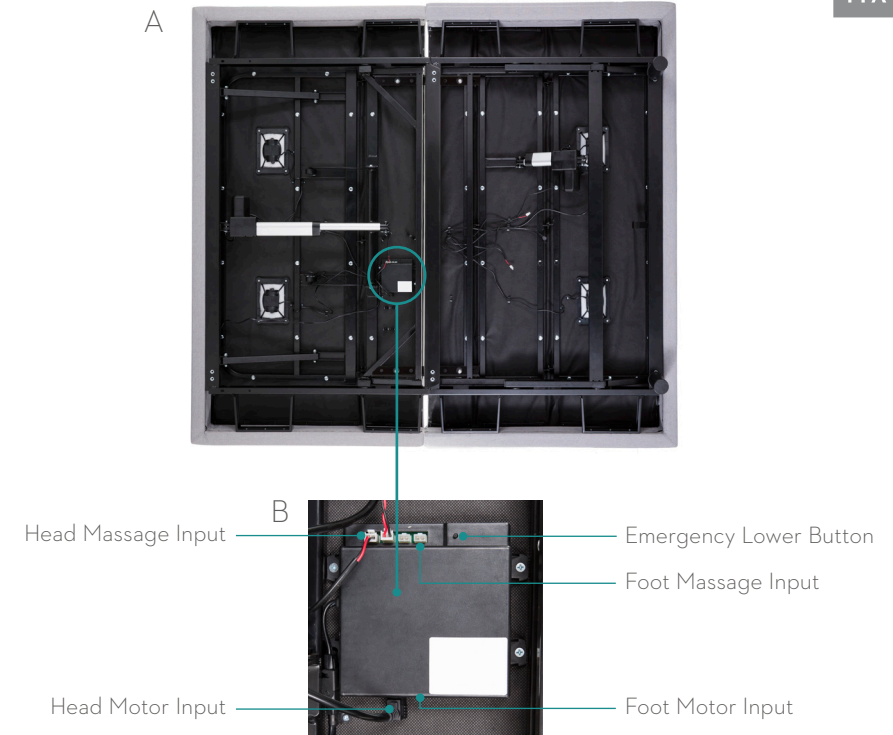


ELECTRIC COMPONENT SETUP

Overview

The electronic components for the foot section of the bed must be installed before use (see *pages 7-10 for instructions*). The diagram opposite of this page illustrates the input locations as well as the emergency lower button located on the control box.

MALOUF[®]



BACKUP BATTERY

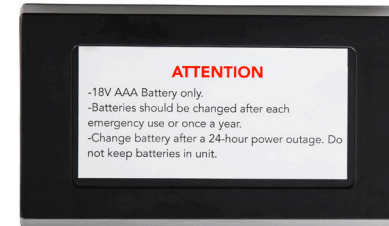
Overview

Important: The backup battery is only to be used in case of a power outage. Batteries are not to be used for normal operation of the bed.

Backup Battery Use:

Use twelve (12) AAA batteries only (not included). If a power outage occurs install the AAA batteries into the provided battery pack (see *image A*). Remove the power cord from the control box and plug in the backup battery pack (see *image B*). The backup battery will not support repeated movement for long periods of time. While using the backup battery it is recommended to move the head and foot of the bed independently rather than simultaneously. Do not use the "Flat" button to lower the bed. Do not use the massage motors when using the battery backup. If the remote control is missing the bed can be returned to the flat position by pressing and holding the emergency lower button located on the control box under the bed (see *image B* on page 20). **Remove the battery pack and install the power cord after power is restored.**

A



18V AAA Battery Compartment
(batteries not included)

B



MASSAGE

Message Function:

To activate the head massage function, press the “HEAD” button once. To turn off head massage, press the “HEAD” button again.

To activate the foot massage function, press the “FOOT” button once. To turn off the foot massage, press the “FOOT” button again.

To adjust the massage intensity press the massage intensity button. The massage intensity increases each time the button is pressed (total of 3 levels). On the highest intensity setting, press the button again to return to the lowest intensity setting.

Message Timer:

Press the “TIMER” button to select a ten (10), twenty (20), or thirty (30) minute massage. Press a fourth time to turn the massage timer off. The blue light on the top of the remote control will flash once indicating which timer setting is activated. Massage will automatically turn off after ten (10) minutes if the timer is not set.

Allow the massaging system to rest for thirty (30) minutes after automatic massage shut off.



TEST ALL FUNCTIONS

Overview

To ensure proper setup, use remote and test all functions for three (3) seconds.

Important: Always return the base to the *flat* position when switching between preset options.

- ☐ Head Motor
- ☐ Foot Motor
- ☐ Head Massage
- ☐ Foot Massage
- ☐ Massage Intensity
- ☐ Zero Gravity
- ☐ Relax
- ☐ TV
- ☐ Flat



ADDITIONAL HELP

If one or more functions of the bed have stopped working:

Check under the bed base to verify the wired connections are secure and there are no cords or bedding obstructing the movement of the base.

The remote control lights no longer illuminate / the remote won't operate the bed functions:

Make sure the batteries are installed correctly or install three (3) new AAA batteries into the remote control. Ensure the frequency of the remote control is synced with the control box on the bed (see *instructions on pages 13 – 14*).

The remote control lights illuminate, however no functions of the bed will operate:

Check to ensure the power cords are properly connected.

Unplug the base for 1 hour to reset the electronic components.

Plug base into a different electrical outlet, or test current outlet with another working appliance. A grounded electrical surge protector is recommended with use of this product.

For further assistance contact us at: 800.517.7179 / customerservice@maloufsleep.com

NOTES:

Serial Number:

The serial number is located on the control box (see page 2 for location diagram)