

STRUCTURES®



This STRUCTURES™ product is backed by a 20-year limited warranty.
For more information, visit:

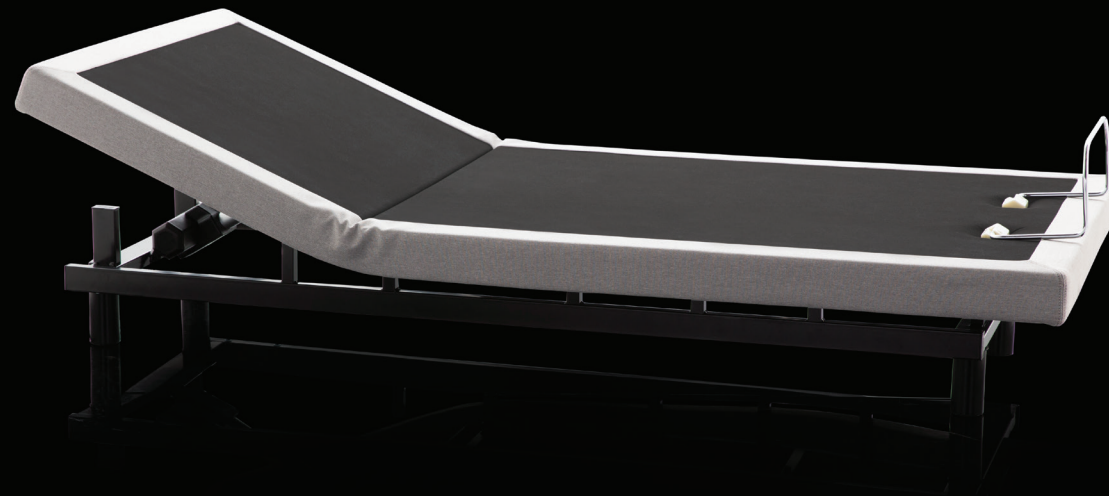
www.maloufsleep.com

WWW.MALOUFFSLEEP.COM • CUSTOMERSERVICE@MALOUFFSLEEP.COM • 800.517.7179

MALOUF®

STRUCTURES®

OWNER'S MANUAL
E200 ADJUSTABLE BASE



WARNINGS

IMPORTANT: PLEASE READ ALL SAFETY INSTRUCTIONS THOROUGHLY BEFORE USING THIS PRODUCT. SAVE THESE INSTRUCTIONS.

ELECTRICAL

- This product is for use on a standard 120-volt circuit.
- Always use a grounded, electrical surge protection device with this product. This product should be plugged directly into the surge protection device and the surge protection device should be plugged directly into a wall outlet.
- Only connect this product to a properly grounded outlet.
- Always unplug this bed from the electrical outlet before cleaning or servicing.
- Never operate with a damaged cord or plug. Keep the cord away from this product's moving parts.
- Keep the cord away from heated surfaces.
- Do not use this product outdoors.
- To disconnect, turn all controls to the off position, then remove plug from outlet.

SMALL CHILDREN / PETS

- Immediately dispose of all packing materials that may pose a suffocation risk.
- Do not allow children or pets to play on or under the bed. Children should not operate this product without adult supervision.

PACEMAKERS

- Some pacemakers may detect motion by this product as a false sense of movement and/or exercise. This may or may not affect your pacemaker. Talk to a physician to address any concerns.

HOME USE / HOSPITAL DISCLAIMER

- This product is designed solely for in-home use and not as a hospital bed. The product does not meet hospital standards. Do not use with oxygen or other flammable gasses.

WEIGHT RESTRICTIONS

- The recommended weight restrictions for the STRUCTURES[™] E200 Adjustable Base are as follows: (all weights include the weight of the mattress and bedding)

Twin: 750 lbs. | Full: 750 lbs. | Twin XL: 750 lbs. | Queen: 750 lbs. | Split Beds: 750 lbs. per side

- This product will support the recommended weight limits when weight is distributed evenly across the base. This product is not designed to support or lift this amount in the head or foot sections alone. Consumers should not enter or exit the bed when any portion of it is in the raised position. Do not sit on the head or foot sections while in the raised position. Exceeding the recommended weight restrictions or other misuse of this product could damage the bed and void the warranty.

PRODUCT RATINGS

IMPORTANT: USE THIS PRODUCT ONLY AS DESCRIBED IN THESE INSTRUCTIONS. DO NOT MODIFY ANY PARTS OR COMPONENTS.

MOTOR RATINGS

- The STRUCTURES™ E200 Adjustable Base motors are not designed to operate for more than two [2] continuous minutes within an eighteen [18] minute time period. Exceeding this rating will shorten the life of the motors, and will void the warranty.

POWER RATINGS

- **INPUT:** AC 100-240V - 50/60Hz, 1.5 Amp
- **OUTPUT:** DC 29V-2A
- **FUSE:** 1.5A 250V
- If a short-circuit occurs, a fuse in the electrical motor compartment will be blown in order to protect the electrical components. Should this occur, the customer should seek professional assistance by calling a licensed electrician or by contacting customer service at: 800.517.7179
- This product is designed to have no maintenance requirements by the user. Please do not open any motor compartments, alter the wiring, modify the base, or change the product in any way as it will void the warranty.

FCC COMPLIANCE

- Operates on 2.4 GHz frequency transmitter.
- This device complies with part 15 of the FCC Rules. Operation is subject to the following two conditions: (1) This device may not cause harmful interference, and (2) this device must accept any interference received, including interference that may cause undesired operation.
- To comply with the FCC RF exposure requirements, no change to the antenna or the device is permitted. Any change to the antenna or the device could result in the device exceeding the RF exposure requirement and void user's right to operate the device.

For any questions or concerns regarding this product please contact MALOUF® directly:

WWW.MALOUFSLEEP.COM • CUSTOMERSERVICE@MALOUFSLEEP.COM • 800.517.7179

CONTENTS

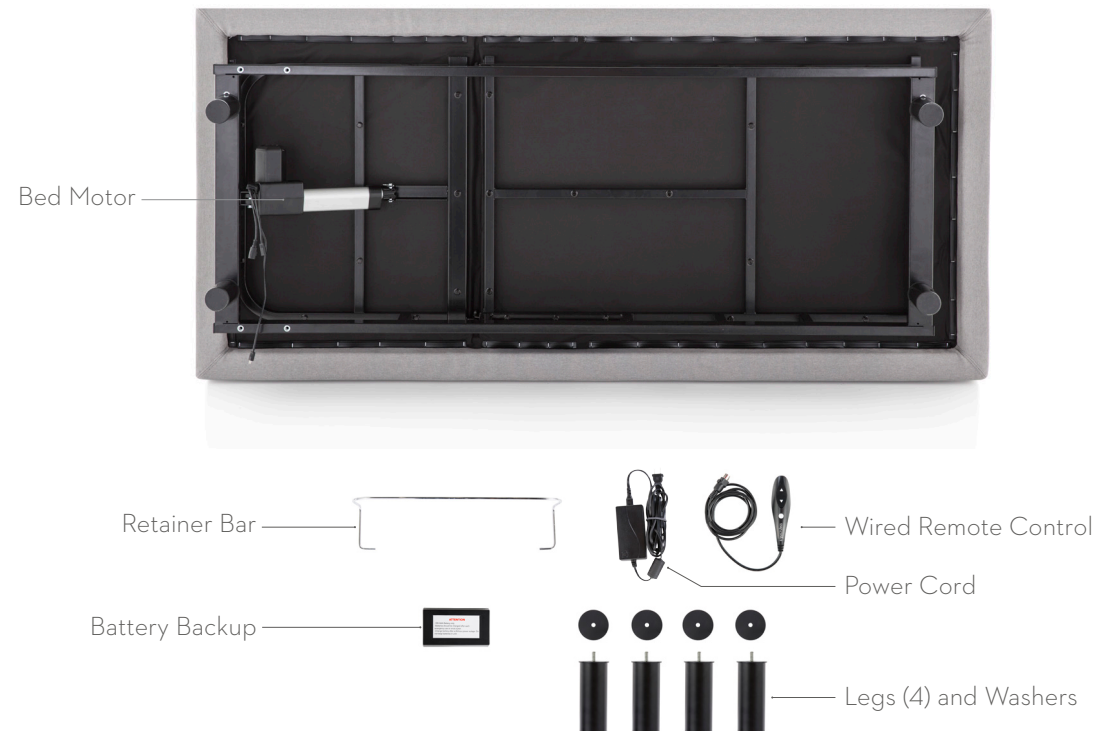
■ Overview _____	1 - 2
■ Assembly _____	3 - 8
■ Remote Control _____	9 - 10
■ Electric Components and Backup Battery _____	11 - 14
■ Test All Functions / Additional Help _____	15 - 18

OVERVIEW

Get to know your product

Before beginning assembly of the STRUCTURES[™] E200 Adjustable Base, please take a moment to familiarize yourself with the parts and location of components. See the adjacent image for a detailed overview.

If any parts or components are missing, or are different than shown in the adjacent image, do not attempt to complete the assembly process and contact customer support: 800.517.7179 / customerservice@maloufsleep.com



ASSEMBLY

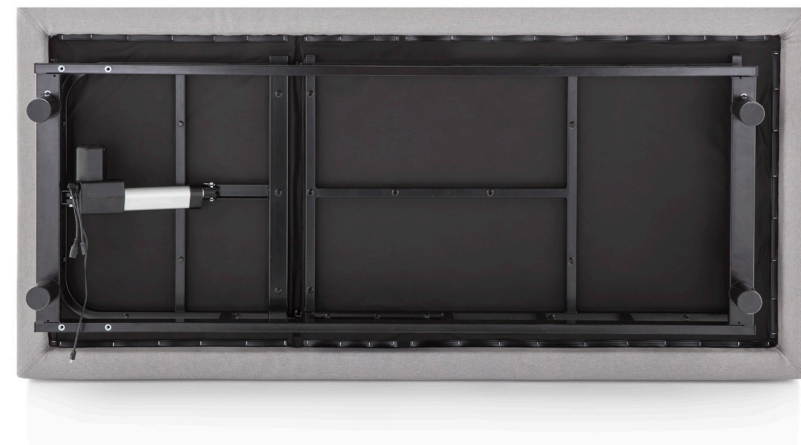
Step 1:

Place the box in the room the bed will be used with the bottom of the box facing up. Carefully remove the binding straps and packaging material, taking care not to puncture the box with any sharp objects.

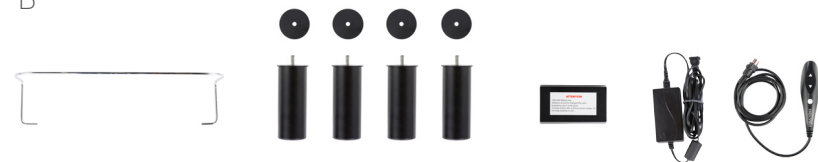
Step 2:

Remove the bed base from the box and set mattress side down on the floor (see *image A*). Remove all plastic and zip ties. All components and parts are located in the underside of the base. Remove attached parts and set aside in preparation for assembly (see *image B*). Check to make sure all parts have been included and are not damaged (see *page 2 for a list of all parts and components*).

A



B



ASSEMBLY

Step 3:

Place the washers on the legs and hand tighten all four (4) legs into the bed frame until secure. Note that there are two location options for each leg, an outside placement or an inside placement. Tighten the legs in the location of your choosing, maintaining a consistent inside or outside location throughout. Take care not to over tighten (see *image A*).

Step 4:

Install the power cord by connecting the cord jack to the receptacle on the bed motor (see *image B*). Be sure the cord is connected completely and securely.

A



B



ASSEMBLY

Step 5:

With two (2) to four (4) people, lift the bed by the metal frame and turn it over so the mattress side is facing up. Take caution not to lift the bed with the fabric, or to use the legs as pivot points causing angled pressure as this may cause damage. Move the bed to the desired location.

Step 6:

To install the mattress retainer bar, place the bar over the receiving area on the foot end of the bed. Press firmly until the bar snaps into the slot. Repeat for the other side. The assembly is now complete.

Plug the power cord into the wall outlet and run the test on pages 15 – 16 of this manual. You may want to familiarize yourself with the remote control functions (*pages 9 – 10*) prior to running the test.

A



REMOTE CONTROL

Overview

Plug the remote control into the receptacle underneath the bed near the bed motor. Ensure that the remote control is inserted completely and securely (*image B*).

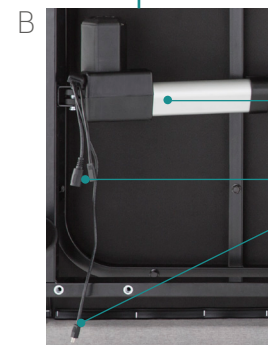
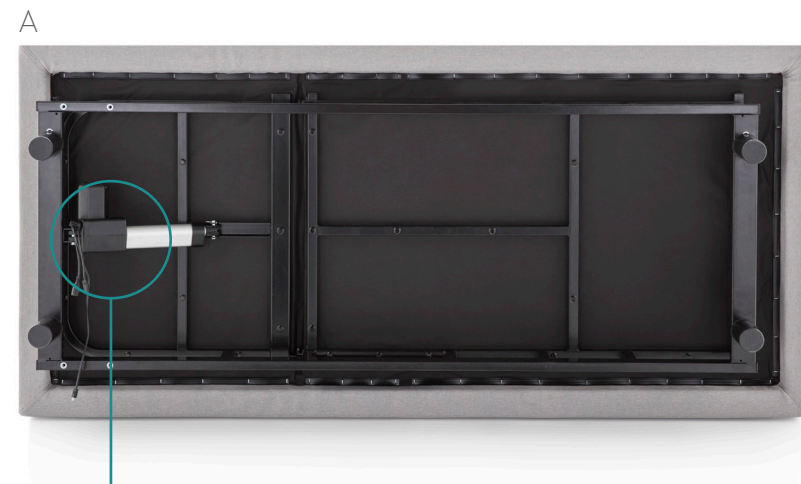
All of the functions of the bed can be operated with the remote control. You can control adjustments using the arrow buttons on the remote control. See the diagram to the right (*image A*) for a complete list of remote control functions.



ELECTRIC COMPONENT SETUP

Overview

The electronic components are pre-installed and no assembly is necessary, however, some input locations are important for proper set up and functionality (see *images A & B* to become familiar with input, setting and part locations).



Motor

Power Cord/Remote Control
Input Connecting Cables

NOTE: There is an extra cable that
will not be needed for this set up.

BACKUP BATTERY

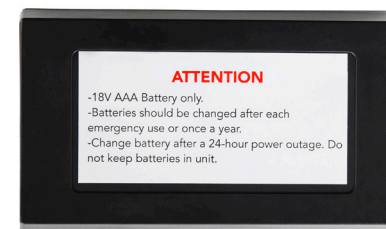
Overview

Important: *The backup battery is only to be used in case of a power outage. Batteries are not to be used for normal operation of the bed.*

Backup Battery Use:

Use twelve (12) AAA batteries only (not included). If a power outage occurs install the AAA batteries into the provided battery pack (see image A). Remove the power cord from the input location under the bed and plug in the backup battery pack as shown in image B. The backup battery will not support repeated movement for long periods of time. While using the backup battery it is recommended to move the head and foot of the bed independently rather than simultaneously. **Remove the battery pack and install the power cord after power is restored.**

A



18V AAA Battery Compartment
(batteries not included)

B



TEST ALL
FUNCTIONS

Overview

To ensure proper setup, use remote and test all functions for three (3) seconds.

- ☐ Head Up
- ☐ Head Down



**ADDITIONAL
HELP**

If one or more functions of the bed have stopped working:

Check under the bed base to verify the wired connections are secure and there are no cords or bedding obstructing the movement of the base.

The remote control won't operate the bed functions:

Make sure the remote control is plugged in completely to the input location underneath the bed. Ensure that the power cord is properly connected and that the power cord is plugged into the wall outlet

No functions of the bed will operate:

Check to ensure the power cord is properly connected.

Unplug the base for 1 hour to reset the electronic components.

Plug base into a different electrical outlet, or test current outlet with another working appliance. A grounded electrical surge protector is recommended with use of this product.

For further assistance contact us at: 800.517.7179 / customerservice@maloufsleep.com

NOTES:
