

STRUCTURES®



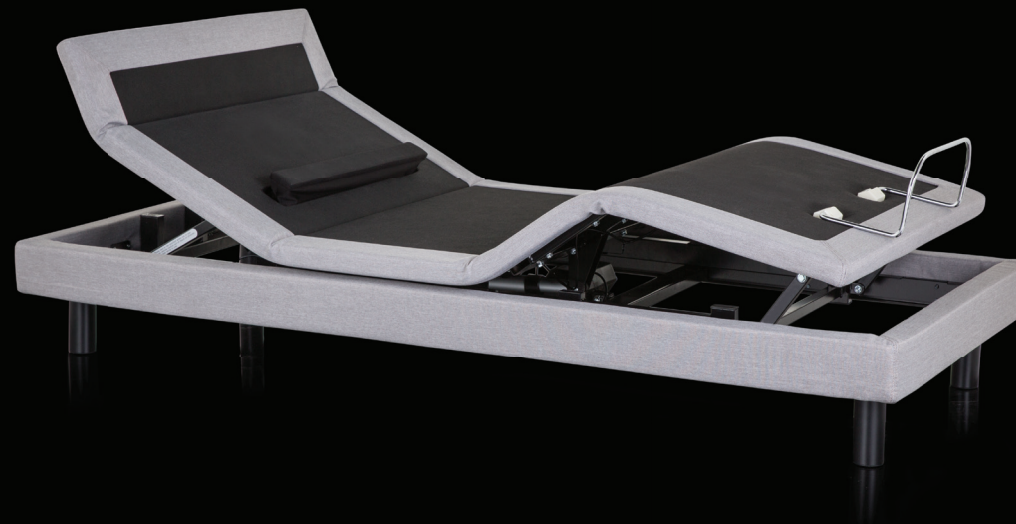
This STRUCTURES™ product is backed by a 20-year limited warranty.
For more information, visit:

www.maloufsleep.com

WWW.MALOUFFSLEEP.COM • CUSTOMERSERVICE@MALOUFFSLEEP.COM • 800.517.7179

MALOUF®

STRUCTURES® OWNER'S MANUAL S700 ADJUSTABLE BASE



WARNINGS

IMPORTANT: PLEASE READ ALL SAFETY INSTRUCTIONS THOROUGHLY BEFORE USING THIS PRODUCT. SAVE THESE INSTRUCTIONS.

ELECTRICAL

- This product is for use on a standard 120-volt circuit.
- Always use a grounded, electrical surge protection device with this product. This product should be plugged directly into the surge protection device and the surge protection device should be plugged directly into a wall outlet.
- Only connect this product to a properly grounded outlet.
- Always unplug this bed from the electrical outlet before cleaning or servicing.
- Never operate with a damaged cord or plug. Keep the cord away from this product's moving parts.
- Keep the cord away from heated surfaces.
- Do not use this product outdoors.
- To disconnect, turn all controls to the off position, then remove plug from outlet.

SMALL CHILDREN / PETS

- Immediately dispose of all packing materials that may pose a suffocation risk.
- Do not allow children or pets to play on or under the bed. Children should not operate this product without adult supervision.

PACEMAKERS

- Some pacemakers may detect motion by this product as a false sense of movement and/or exercise. This may or may not affect your pacemaker. Talk to a physician to address any concerns.

HOME USE / HOSPITAL DISCLAIMER

- This product is designed solely for in-home use and not as a hospital bed. The product does not meet hospital standards. Do not use with oxygen or other flammable gasses.

WEIGHT RESTRICTIONS

- The recommended weight restrictions for the STRUCTURES[™] S700 Adjustable Base are as follows: (all weights include the weight of the mattress and bedding)

Twin: 750 lbs. | Full: 750 lbs. | Twin XL: 750 lbs. | Queen: 750 lbs. | Split Beds: 750 lbs. per side

- This product will support the recommended weight limits when weight is distributed evenly across the base. This product is not designed to support or lift this amount in the head or foot sections alone. Consumers should not enter or exit the bed when any portion of it is in the raised position. Do not sit on the head or foot sections while in the raised position. Exceeding the recommended weight restrictions or other misuse of this product could damage the bed and void the warranty.

SOUND

- The massage function will emit an audible tone during operation. The volume of this tone is directly related to the location and environment. For example, a bed placed on wooden flooring may increase the audible tone of the massage function, where a bed placed on carpet may emit a softer tone.

PRODUCT RATINGS

IMPORTANT: USE THIS PRODUCT ONLY AS DESCRIBED IN THESE INSTRUCTIONS. DO NOT MODIFY ANY PARTS OR COMPONENTS.

MOTOR RATINGS

- The STRUCTURES™ S700 Adjustable Base motors are not designed to operate for more than two [2] continuous minutes within an eighteen [18] minute time period. Exceeding this rating will shorten the life of the motors, and will void the warranty.

POWER RATINGS

- **INPUT:** AC 100-240V - 50/60Hz, 1.5 Amp
- **OUTPUT:** DC 29V-2A
- **FUSE:** 1.5A 250V
- If a short-circuit occurs, a fuse in the electrical motor compartment will be blown in order to protect the electrical components. Should this occur, the customer should seek professional assistance by calling a licensed electrician or by contacting customer service at: 800.517.7179
- This product is designed to have no maintenance requirements by the user. Please do not open any motor compartments, alter the wiring, modify the base, or change the product in any way as it will void the warranty.

FCC COMPLIANCE

- Operates on 2.4 GHz frequency transmitter.
- This device complies with part 15 of the FCC Rules. Operation is subject to the following two conditions: (1) This device may not cause harmful interference, and (2) this device must accept any interference received, including interference that may cause undesired operation.
- To comply with the FCC RF exposure requirements, no change to the antenna or the device is permitted. Any change to the antenna or the device could result in the device exceeding the RF exposure requirement and void user's right to operate the device.

For any questions or concerns regarding this product please contact MALOUF® directly:

WWW.MALOUFSLEEP.COM • CUSTOMERSERVICE@MALOUFSLEEP.COM • 800.517.7179

CONTENTS

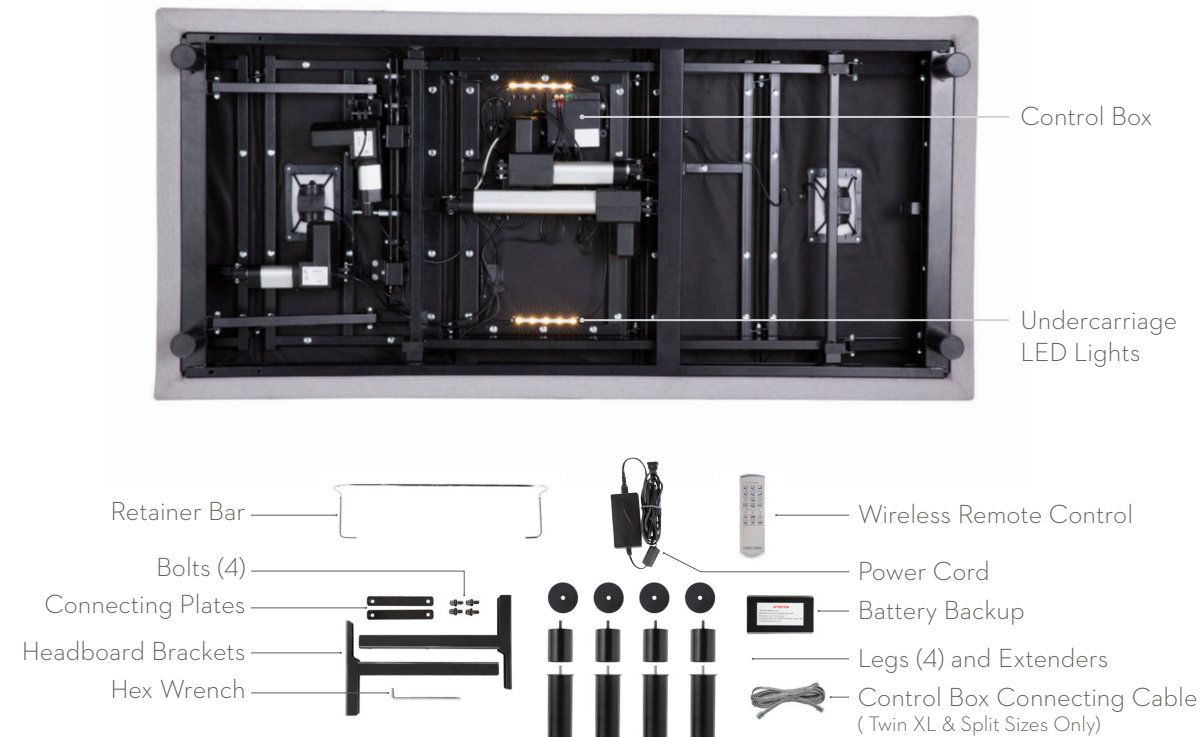
■ Overview	1 - 2
■ Assembly	3 - 10
■ Remote Control	11 - 18
■ Electric Components and Backup Battery	19 - 24
■ Massage	25 - 26
■ Test All Functions / Additional Help	27 - 30

OVERVIEW

Get to know your product

Before beginning assembly of the STRUCTURES™ S700 Adjustable Base, please take a moment to familiarize yourself with the parts and location of components. See the adjacent image for a detailed overview.

If any parts or components are missing, or are different than shown in the adjacent image, do not attempt to complete the assembly process and contact customer support: 800.517.7179 / customerservice@maloufsleep.com



ASSEMBLY

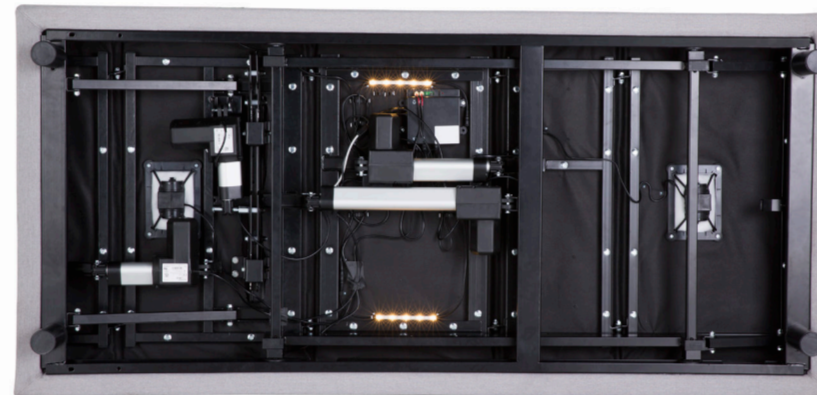
Step 1:

Place the box in the room the bed will be used with the bottom of the box facing up. Carefully remove the binding straps and packaging material, taking care not to puncture the box with any sharp objects.

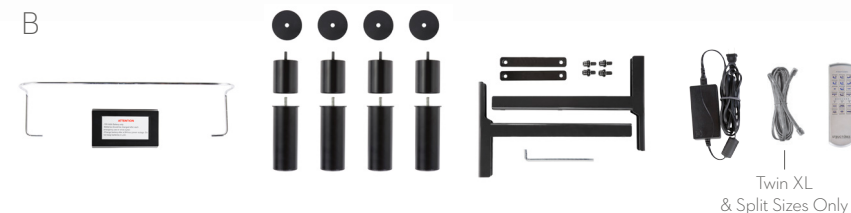
Step 2:

Remove the bed base from the box and set mattress side down on the floor (see *image A*). Remove all plastic and zip ties. All components and parts are located in the underside of the base. Remove attached parts and set aside in preparation for assembly (see *image B*). Check to make sure all parts have been included and are not damaged (see *page 2 for a list of all parts and components*).

A



B



ASSEMBLY

Step 3:

Place the washers on the legs and hand tighten all four (4) legs into the bed frame until secure. The legs can be used with or without the height extension piece. Note that there are two location options for each leg, an outside placement or an inside placement. Tighten the legs in the location of your choosing, maintaining a consistent inside or outside location throughout. Take care not to over tighten (see *image A*).

Step 4:

Install the power cord by connecting the cord jack to the receptacle on the control box (see *image B*). Be sure the cord is connected completely and securely.

A



B



ASSEMBLY

Headboard brackets (Optional)

Step 5:

To install the headboard brackets, place the connecting plate underneath the frame at the head of the bed base, aligning the holes of the connecting plate with the holes on the frame (see *image A*).

Step 6:

While holding the connecting bracket in place, align the headboard bracket with the holes on the frame of the bed base and hand tighten the bolts (see *image B*). When all bolts are hand tightened and the headboard brackets are properly aligned, secure the headboard brackets by tightening all the bolts with the included hex wrench. Take care not to over tighten the bolts.

A



B



ASSEMBLY

Step 7:

With two (2) to four (4) people, lift the bed by the metal frame and turn it over so the mattress side is facing up. Take caution not to lift the bed with the fabric, or to use the legs as pivot points causing angled pressure as this may cause damage. Move the bed to the desired location.

Step 8:

To install the mattress retainer bar, place the bar over the receiving area on the foot end of the bed. Press firmly until the bar snaps into the slot. Repeat for the other side. The assembly is now complete.

Plug the power cord into the wall outlet and run the test on pages 23 – 24 of this manual. You may want to familiarize yourself with the remote control functions (pages 11 – 16) prior to running the test.

A



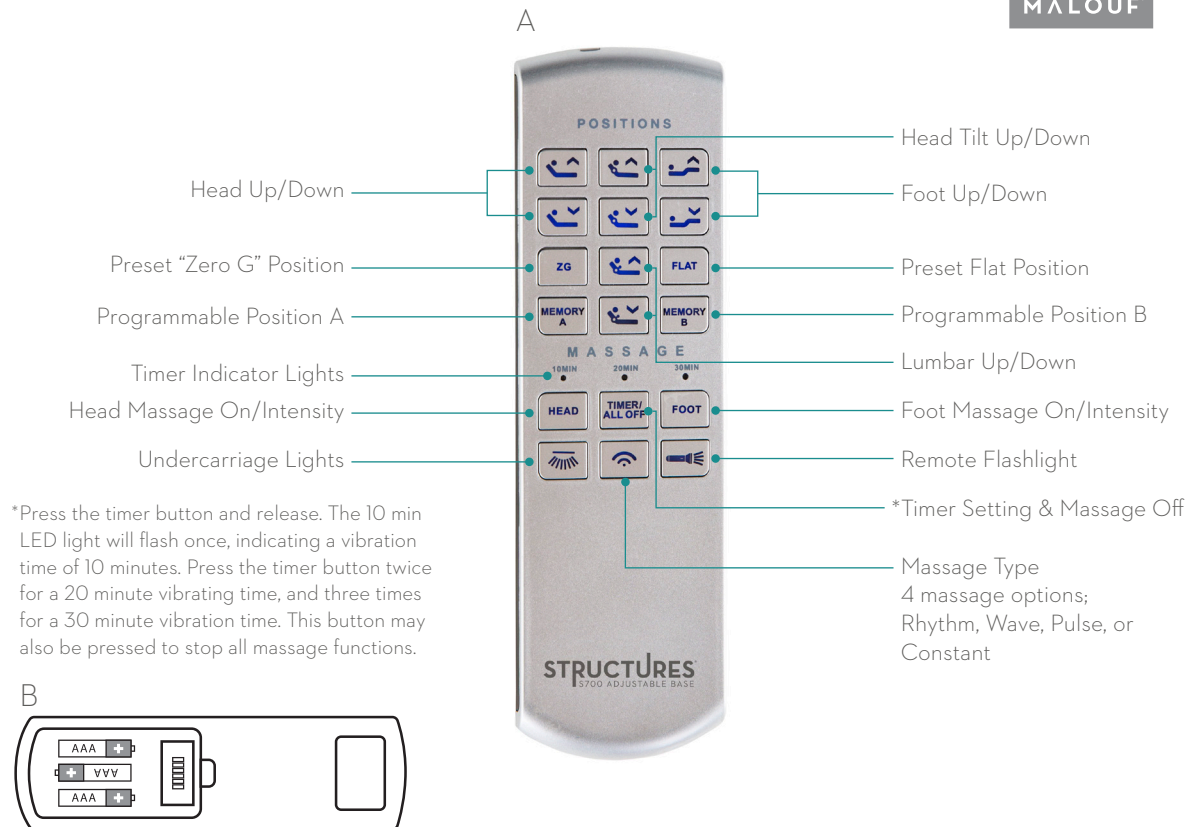
REMOTE CONTROL

Overview

All of the functions of the bed can be operated with the remote control. The remote control comes with pre-programmed buttons that will automatically adjust when pressed, or you can manually control adjustments using the arrow buttons on the remote control. See the diagram to the right (*image A*) for a complete list of remote control functions.

Remote Control Battery Installation:

Remove the battery cover on the back side of the remote control. Insert the AAA batteries (included) as shown (see *image B*).



REMOTE CONTROL

Custom Programming Buttons

The “ZG”, “MEMORY A”, and “MEMORY B” buttons can be custom programmed to positions of your choosing. To program the remote preset buttons:

1. Adjust the bed to the desired position
2. Press and hold the “TIMER/ALL OFF” button for approximately three (3) seconds until the lights on the remote control start flashing.
3. Release the “TIMER/ALL OFF” button and within two (2) seconds press the “ZG”, “MEMORY A”, or “MEMORY B” buttons. The lights on the remote control will stop flashing and the selected button is updated to the new position.



NOTE:

The three buttons shown here are pre-programmed with the manufacturers suggested bed positions. No programming is necessary by the user unless modified bed positions are desired.

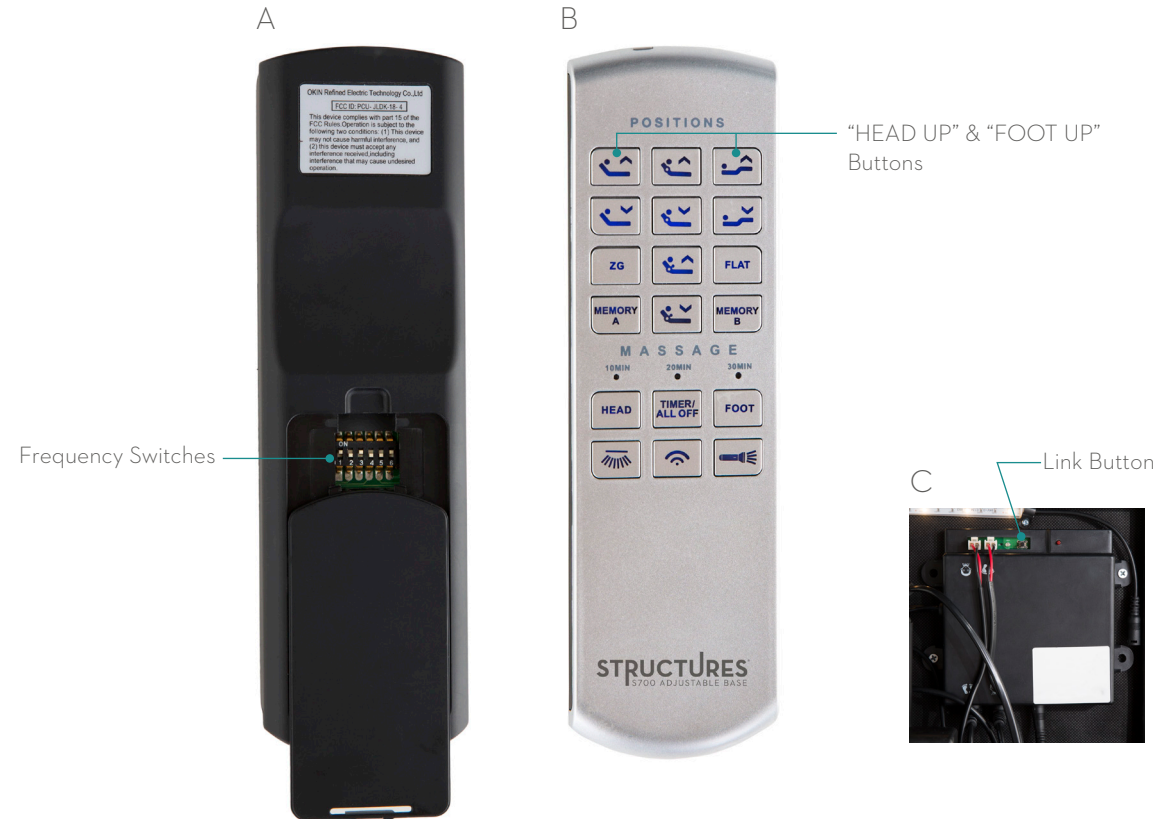
REMOTE CONTROL

Remote Control Frequency Settings

There are several different frequency settings for independent control of multiple adjustable beds in the same area.

To Set a Frequency

1. Remove the battery cover from the remote control and adjust the switch to the desired channel (see *image A*).
2. Press and hold the “Link” button located underneath the bed on the control box until the LED indicator light starts flashing (see *image C*).
3. Press and hold the “HEAD UP” and “FOOT UP” buttons simultaneously (see *image B*) on the remote control until the remote control lights start flashing. When flashing, release the two buttons. The lights will continue flashing until a successful sync with the control box is achieved. The frequency setting is now updated.
4. If the remote does not sync, repeat the process and check the remote control batteries.



REMOTE CONTROL

Child Lock Safety Feature

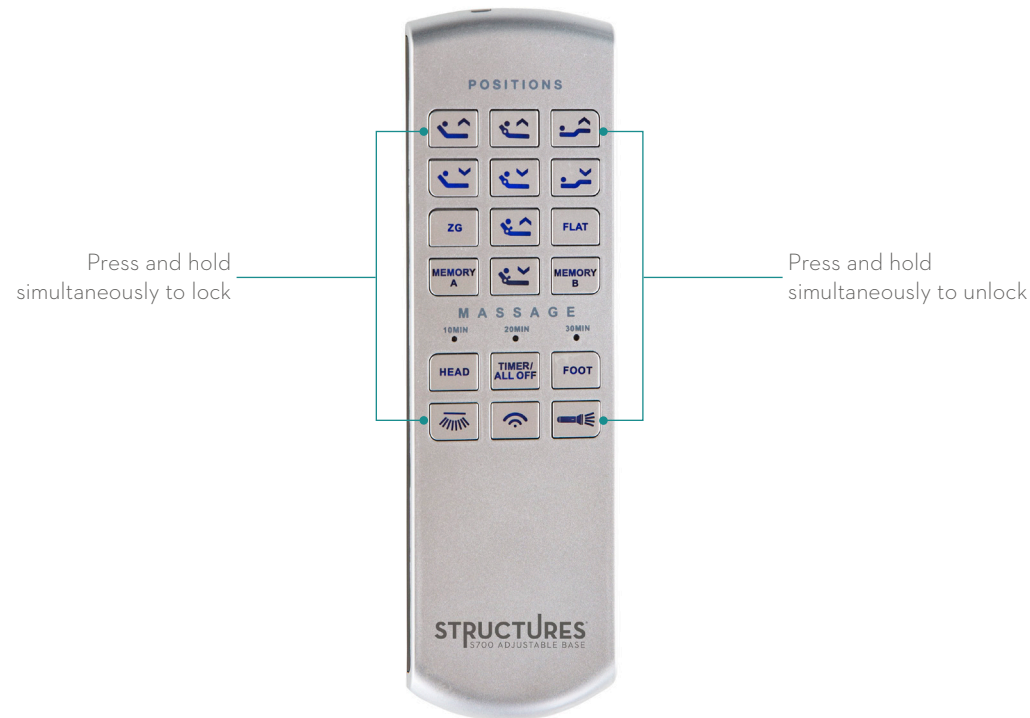
The remote control can be locked to prevent movement of the bed. When the remote control is locked, no buttons will function.

To lock the remote control:

- Press and hold the "HEAD UP" and "UNDERCARRIAGE LIGHT" buttons simultaneously until the lights on the remote control flash several times in quick succession. The remote control is now locked and will not function.

To unlock the remote control:

- Press and hold the "FOOT UP" and "FLASHLIGHT" buttons simultaneously until the lights on the remote control flash several times in quick succession. The remote control is now unlocked and will function normally.



STRUCTURES[®]

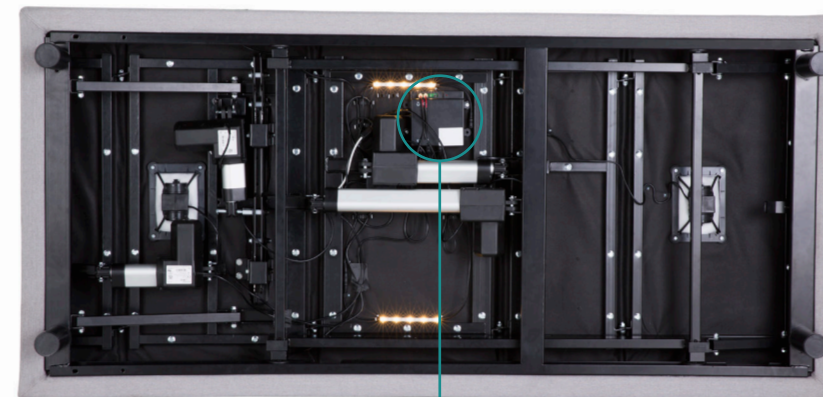
OWNER'S MANUAL
S700 ADJUSTABLE BASE

ELECTRIC COMPONENT SETUP

Overview

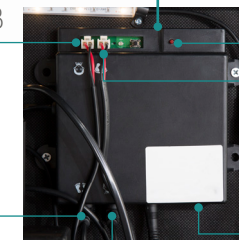
The electronic components are pre-installed and no assembly is necessary, however, some setting and input locations are important for proper set up and functionality (see images A & B to become familiar with input, setting and part locations).

A



B

Head Massage Input



Emergency Lower Button

Foot Massage Input

Foot Motor Input

Head Motor Input

Control Box Connecting
Cable Input

ELECTRIC COMPONENT SETUP

USB Ports

USB ports are located under the head portion of the bed base at two (2) locations (see *image A*). To access the USB ports, press the “HEAD UP” button to raise the bed and reveal the USB ports. Once your device is plugged into the USB port, you may lower or adjust the bed to your preference.



BACKUP BATTERY

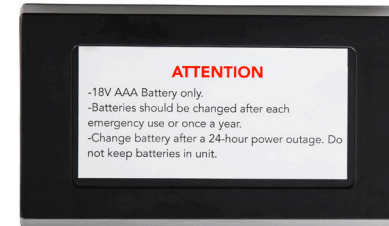
Overview

Important: The backup battery is only to be used in case of a power outage. Batteries are not to be used for normal operation of the bed.

Backup Battery Use:

Use twelve (12) AAA batteries only (not included). If a power outage occurs install the AAA batteries into the provided battery pack (see *image A*). Remove the power cord from the control box and plug in the backup battery pack (see *image B*). The backup battery will not support repeated movement for long periods of time. While using the backup battery it is recommended to move the head and foot of the bed independently rather than simultaneously. Do not use the “Flat” button to lower the bed. Do not use the massage motors when using the battery backup. If the remote control is missing the bed can be returned to the flat position by pressing and holding the emergency lower button located on the control box under the bed (see *image B* on page 18). **Remove the battery pack and install the power cord after power is restored.**

A



18V AAA Battery Compartment
(batteries not included)

B



MESSAGE

Message Function:

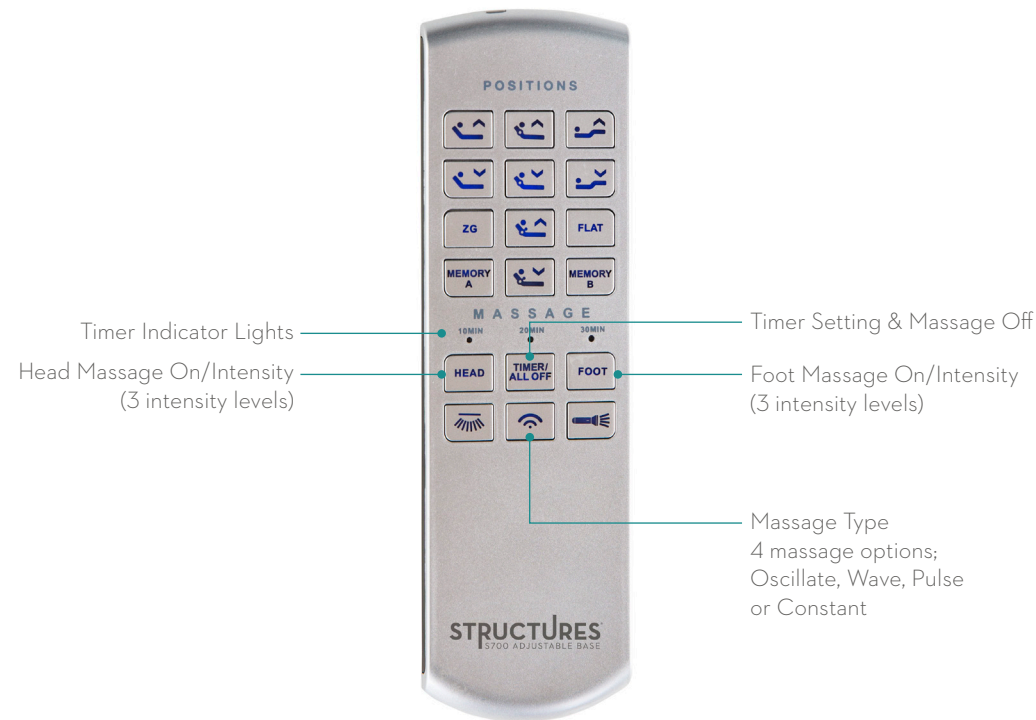
To activate the head massage function, press the “HEAD” button once. To adjust the intensity of the massage function, press the “HEAD” button again. There are three levels of intensity. To activate the foot massage function, press the “FOOT” button once. To adjust the intensity of the massage function, press the “FOOT” button again. There are three levels of intensity.

Message Timer:

Press the “TIMER” button to select a ten (10), twenty (20), or thirty (30) minute massage. The blue light above each time will flash once indicating which timer setting is activated. Massage will automatically turn off after ten (10) minutes if the timer is not set. Allow the massaging system to rest for thirty (30) minutes after automatic massage shut off.

Message Type:

There are four (4) massage type options; oscillate, wave, pulse or constant. Press the Message Type button to activate an alternate massage option. The default massage option is set to constant.



TEST ALL FUNCTIONS

Overview

To ensure proper setup, use remote and test all functions for three (3) seconds.

Important: Always return the base to the flat position when switching between preset options.

- ☐ Head Motor
- ☐ Foot Motor
- ☐ Head Tilt Motor
- ☐ Lumbar Motor
- ☐ Head Massage
- ☐ Foot Massage
- ☐ Massage Type
- ☐ Zero Gravity
- ☐ Memory A
- ☐ Memory B
- ☐ Flat
- ☐ Undercarriage Lights



ADDITIONAL HELP

If one or more functions of the bed have stopped working or one or more of the remote control buttons activate the wrong function:

Check under the bed base to verify the wired connections are secure and there are no cords or bedding obstructing the movement of the base. If the remote control activates the wrong function, the motors are plugged into the wrong input on the control box. Switch the input location of the cords on the control box.

The remote control lights no longer illuminate / the remote won't operate the bed functions:

Ensure child lock has been deactivated (see pages 17 – 18). Make sure the batteries are installed correctly or install three (3) new AAA batteries into the remote control. Ensure the frequency of the remote control is synced with the control box on the bed (see pages 13 – 14).

The remote control lights illuminate, however no functions of the bed will operate:

Check to ensure the power cords are properly connected.

Unplug the base for 1 hour to reset the electronic components.

Plug base into a different electrical outlet, or test current outlet with another working appliance. A grounded electrical surge protector is recommended with use of this product.

For further assistance contact us at: 800.517.7179 / customerservice@maloufsleep.com

NOTES:

Serial Number:

The serial number is located on the control box (see page 2 for location diagram)

